

Light efficiency:

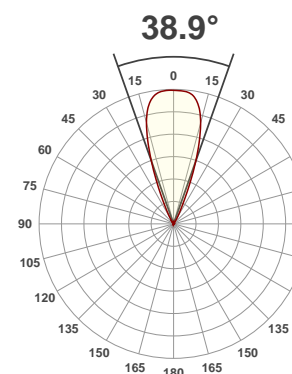
18 Lumen/Watt

Light quality:

CRI: 72.6

Color temperature:

7351 K



Product name:

Chorus Line16

Test:

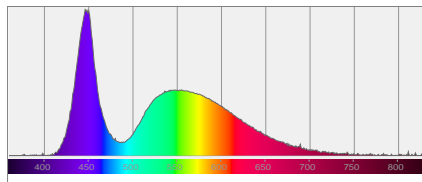
Zoom Out White

Date:

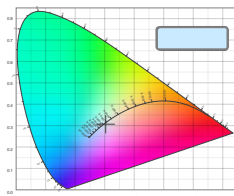
7/20/2017

Output: 3605 lm Power consumption: 196 W Peak: 8521 cd

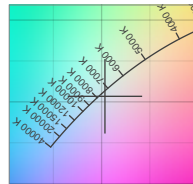
Spectral distribution



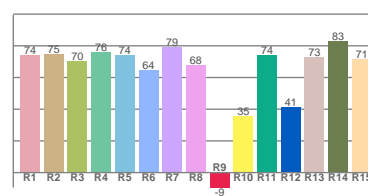
Color coordinates



Zoom color point

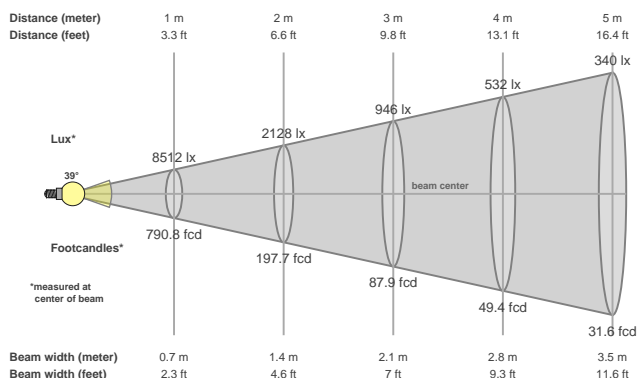


CRI R values



Color temperature	Color rendering index	Red component	Color fidelity	Color gamut	Color quality scale	Color coordinate cie 1931	Color coordinate cie 1931	Color coordinate	Color coordinate	Color divition from black body
CCT	CRI	CRI R9	TM30 Rf	TM30 Rg	CQS	x	y	u	v	Δuv
7351 K	72.6	-9.4	66.7	95.2	68.2	0.303	0.307	0.200	0.303	0.0068

Beam details



Beam angels

Beam angle 50%	Field angle 10%	Cutoff angle 2,5%
38.9°	55.2°	67.4°

Beam intensities

Peak intensity	Int. ratio in 120° cone	Int. ratio in 90° cone
8521 cd	96.5%	95.6%

Power

Power	Power factor	Power frequency
196 W	0.99	60 Hz

Nominal voltage	Voltage	Current
230 V	115 V	1.72 A

Beam intensities from 1-20m

1m	2m	3m	4m	5m	6m	7m	8m	9m	10m	11m	12m	13m	14m	15m	16m	17m	18m	19m	20m
3.3ft	6.6ft	9.8ft	13.1ft	16.4ft	19.7ft	23ft	26.2ft	29.5ft	32.8ft	36.1ft	39.4ft	42.7ft	45.9ft	49.2ft	52.5ft	55.8ft	59.1ft	62.3ft	65.6ft
8512lx	2128lx	946lx	532lx	340lx	236lx	174lx	133lx	105lx	85lx	70lx	59lx	50lx	43lx	38lx	33lx	29lx	26lx	24lx	21lx
790.8fcd	197.7fcd	87.9fcd	49.4fcd	31.6fcd	22fcd	16.1fcd	12.4fcd	9.8fcd	7.9fcd	6.5fcd	5.5fcd	4.7fcd	4fcd	3.5fcd	3.1fcd	2.7fcd	2.4fcd	2.2fcd	2fcd